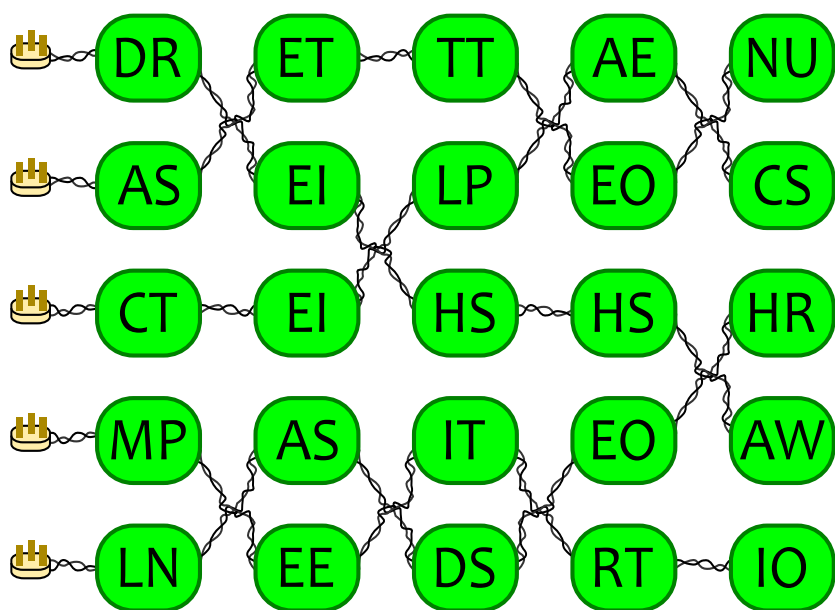


PUZZLEBOMB

TWELFTH LIGHTS

TWELFTH LIGHTS:
by @stecks

In order to put away the Christmas decorations, you must untangle the five strings of fairy lights. Each wire spells a ten-letter word, taking one letter (not necessarily the first) from each bulb as you move away from the plug, and the other letter on your way back (each word uses one bulb from each column).



WORD ADDER 2

WORD ADDER 2: by @stecks and @apaultaylor.

Each clue leads to a pair of four-letter words, the letters of the second of which are found by advancing three of the letters of the first word by TWO in the alphabet. The unchanged letter in each pair of words spells a word.

Mr. Winton's pointy tooth

Your gall bladder is ready!

Hyenas in the Lion King?

Otherwise take a swig

Jeremy's beautiful hair

APIS CLUES

Here are five cryptic crossword clues. You must solve the clues, then find the connection between the answers.

1. Came across brick-carrier's system (6)
2. Moral failure ultimately leads to troglodyte hounding inappropriately clothed, attractive ladies (7)
3. Professional centre-forward making sexual invitation (11)
4. Timeless target for jokes: locks that could have saved the Tay bridge? (10)
5. Rat trap overhauled, primarily to capture small bird (7)

APIS CLUES: devised by @apisclues.

PUZZLEBOMB

WORD ADDER 2

WORD ADDER 2: by @stecks and @apaultaylor.

Each clue leads to a pair of four-letter words, the letters of the second of which are found by advancing three of the letters of the first word by TWO in the alphabet. The unchanged letter in each pair of words spells a word.

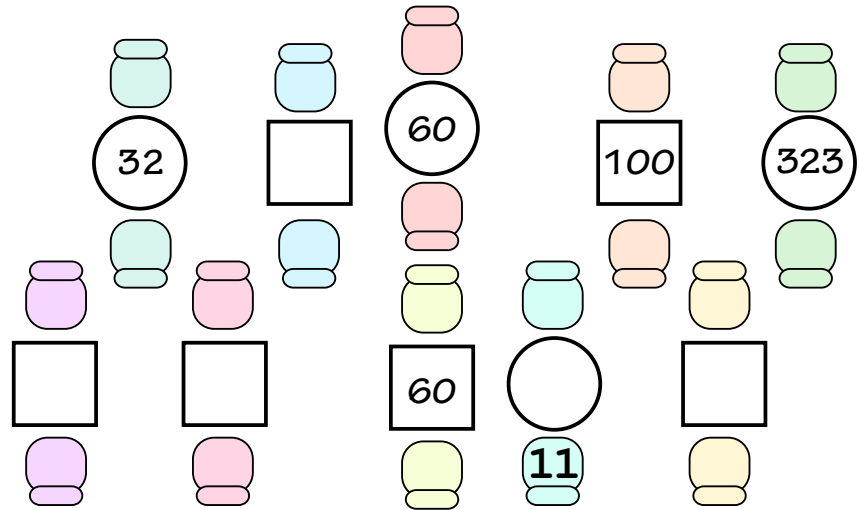
A billion omelettes

Prison hero

Mr. Stewart's protein

Blindfolds?

Rejecting school this Autumn



The numbers 1 to 20 are going out for dinner, seated in pairs. The rules of the restaurant are:

- The table number is the product of the two numbers seated there. Some table numbers are missing.
- Odd-odd and even-even couples are seated at round tables, and odd-even couples are seated at square tables.
- On three tables, the diners have a difference of 11, and on two tables they have a difference of 2.
- Table numbers increase from left to right.

Can you work out which table everyone is sitting at?

VALENTINES TABLES

VALENTINES TABLES: by @stecks & @apaultaylor, idea by @christianp.

APIS CLUES

Here are four cryptic crossword clues. You must solve the clues, then find the connection between the answers.

1. Muse with a Turkish flute carries heart beyond ocean for poet (6,6)
2. Explorer cut short, bound to pole (10)
3. Kirk Reginald, travel writer (3,6)
4. Dramatist's idiot competition? (7)

APIS CLUES: devised by @apisclues.

PUZZLEBOMB

Use the clues to determine which four-letter word goes with each pancake. Four theme words are missing from the clues.

STACK ATTACK: by @stecks & @apaultaylor

----- IN THROAT

WATER IRON

PAPER FICTION

RING APART

STRAW TAX

NORTH VAULT

----- TRADER

CANDY -----

TRASH OF WORMS

THUNDER EYES

TOP OFF

SMASH BACK

----- AND PIECES

STACK ATTACK

APIS CLUES

Here are four cryptic crossword clues. You must solve the clues, then find the connection between the answers.

1. Pretend gold for one portraying Goldfinger? (5)
2. Speak initial syllable twice at the beginning (7)
3. A man indebted to mould-juice, a Macedonian writer who imagined one could empty Fort Knox (9,7)
4. City witches going over the line? (8)
5. It's on display here - something to explain the location of the departure gates with? (8,11)

APIS CLUES: devised by @apisclues.

PUZZLEBOMB

5	1	2	2	1	6	3	8	4	3
2	1	4	3	0	4	6	7	2	1
6	7	5	2	4	0	1	8	8	7
5	6	8	5	9	1	1	1	7	0
1	4	3	2	7	6	8	2	3	8
5	9	3	8	6	9	1	5	5	5
3	2	3	4	7	8	2	9	6	9
0	0	0	0	0	2	3	2	9	3
1	8	8	8	5	3	4	1	2	7
6	9	2	1	4	1	3	9	2	5

Numbers:

2 2 3 3 ~~5~~ 6 7
 7 7 8 9 11 14
 15 18 19 20 23
 25

Powers:

2 3 3 3 4 4 4
 5 5 6 ~~7~~ 7 7 8
 8 9 14 14 15

Example: $5^7 = 78125$

Name: _____

Pair up the numbers with the power you must raise them to, then find the result running horizontally or vertically in the grid. In the squares not used, you will find a set of numbers with a common property. By way of celebration, write a relevant name below the grid.

POWER GRID

POWER GRID:
by @stecks

APIS CLUES

Here are four cryptic crossword clues. You must solve the clues, then find the connection between the answers.

1. At which a traitor is revealed - one who finished the bottle? (3,4,6)
2. Crumbling, reheated, off Host: an unfortunate event for a holy man? (3,5,2,5)
3. Madonna replacing barber in opera for a well-known carpenter's wedding (3,8,2,3,6)
4. What's painted on the chapel ceiling - an event for which Boulder City was built? (3,8,2,4)

APIS CLUES: devised by @apisclues.

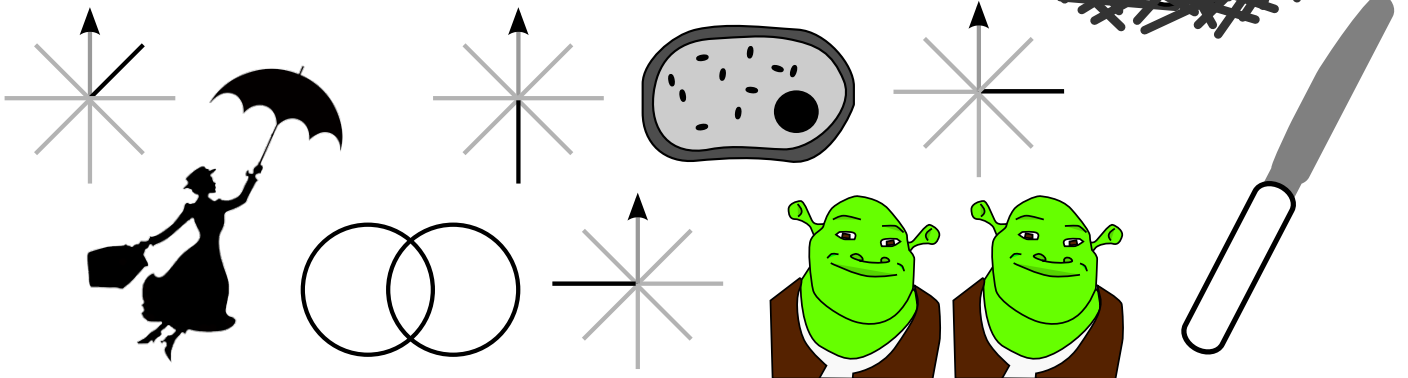
PUZZLEBOMB: assembled by @stecks.

PUZZLEBOMB

LYME [] [] [] [] [] []
 TYNE [] [] [] [] [] []
 BURTON [] [] [] [] [] []
 NEWARK [] [] [] [] [] []
 THORNABY [] [] [] [] [] []
 STOCKTON [] [] [] [] [] []
 BARROW [] [] [] [] [] []
 BROUGHTON [] [] [] [] [] []

LYNE [] [] [] [] [] []
 MAKER [] [] [] [] [] []
 STRATFORD [] [] [] [] [] []
 BRADFORD [] [] [] [] [] []
 AR [] [] [] [] [] []

[] [] [] [] [] []
 THAMES [] [] [] [] [] []
 HULL [] [] [] [] [] []
 DEN [] [] [] [] [] []
 THAMES [] [] [] [] [] []



Fill in the blanks, then use the same letters to make all of the answers to the picture clues.

IN PLACE

IN PLACE
by @stecks

APIS CLUES

Here are four cryptic crossword clues. You must solve the clues, then find the connection between the answers.

APIS CLUES: devised by @apisclues.

1. Wimp, perhaps, going to Nebraska with initially anxious under 21s (6)
2. Small Samoan coin lass gives African country (7)
3. Chad's neighbour David eats Polo (8)
4. Country wife of Augustus preceded by the smell of her armpits? (7)
5. Last line of roadside poem is half-censored for one close to China (5)

PUZZLEBOMB: assembled by @stecks.

PUZZLEBOMB

C	U	P	G	R	O	U	P	E	R	A	D	I	U	S
Q	P	R	O	D	U	C	T	H	O	G	A	S	T	Y
D	B	A	L	L	T	V	E	C	T	O	R	Q	N	O
I	N	T	E	R	S	E	C	T	I	O	N	U	A	L
M	O	I	M	A	L	C	Z	N	N	D	E	A	T	A
A	R	O	O	T	I	T	E	A	R	D	V	R	S	R
G	M	N	I	I	D	O	B	T	U	S	E	E	N	U
I	A	A	N	O	E	R	R	O	R	E	X	E	O	T
N	L	L	T	N	G	E	A	C	U	T	E	M	C	A
A	B	A	E	A	R	A	F	U	N	C	T	I	O	N
R	A	N	G	L	E	L	M	S	I	N	I	R	M	G
Y	S	E	R	I	E	S	C	H	O	R	D	P	P	L
G	R	E	A	T	F	P	L	A	N	E	T	U	L	E
E	D	E	L	T	A	U	T	N	G	A	M	R	E	T
L	A	P	O	W	E	R	U	S	O	L	C	E	X	A

- Baby's reciprocal of bed tangent
- Angle of diploma unit
- Deposit change in alluvial value
- By flat two, level and divisible
- Party to assignment values of event or inputs
- Operation with people of set collection
- Made of one root, like square minus up
- Essential under a curve area
- Both crossroads (things found in America) sets in
- Raised tree which must power a number of trunk to be a piece
- Positive not a number, of artificial whole
- From angles standard at deviating: not right
- Right awkward and more uncooperative than angle A
- Two-dimensional passenger surface aircraft
- Authority exponent
- Quality divisible, not high
- Marketable result of object multiplying
- Lower bone distance to the centre arm
- As reasonable: a fraction expressible and sane
- No authentic part having imaginary
- Plant square opposite part of underground
- A TV terms sum of programme of season A
- Objects of hard collection turn
- Transgression over hypotenuse, or opposite crime
- Open quadrilateral in regular space city
- Opposite skin adjacent to darkening sun over due
- A school: third item in a year of formula
- Total representation of both worker's sets
- Magnitude with disease spreads direction

- Degrees less urgent than 90
- Between lines, view point of inclination two
- Points away, less equipment than a distance of playing set
- Played together in circle, notes in a line
- Closed ends of smallest resolution containing loose set
- Imaginary and with real difficult parts to understand
- Ongoing value

Unjumble the mathematical meanings from the usual meanings, and find the words in the grid.

WEIRDSEARCH

WEIRDSEARCH
by @stecks

APIS CLUES

Here are five cryptic crossword clues. You must solve the clues, then find the connection between the answers.

APIS CLUES: devised by @apisclues.

1. Electoral system, booze and innate, classless confusion produce the man of the day (2,9)
2. Comic effect begins to take hold at last: the German band loses direction (5,6)
3. No - no pale minced pig (8)
4. Edward B.'s tungsten bellybutton protector first displayed in the Overseas Operations Handbook introductions (6-3-4)
5. I used to post to Twitter and Facebook (4)

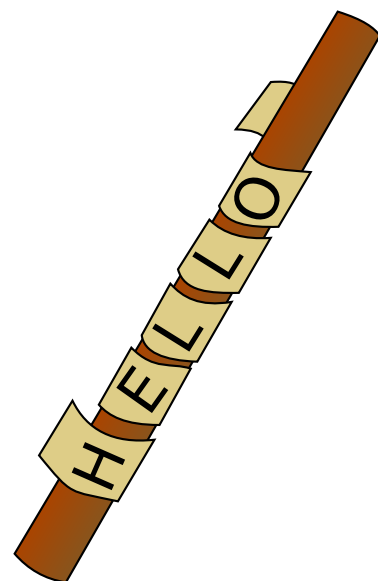
PUZZLEBOMB: assembled by @stecks.

PUZZLEBOMB

STRIPTEASER: devised by @stecks & @apaultaylor.

STRIP TEASER

The four strips of letters can be joined together in some order to create a scytale cipher strip. Wrapping it around sticks of different thicknesses will spell out rough clues to the types of codes and ciphers listed on the right, starting from the same first letter and working downwards. Find which value of stick circumference gives each answer. The sum of all the circumferences is 115.



ANAGRAM
BRAILLE
CAESAR
ENIGMA
PIGPEN
PLAYFAIR
PUBLIC KEY
ROT-13

O	R	I	A
U	T	A	R
M	H	N	R
S	E	N	A
M	E	-	R
T	S	T	T
I	E	O	O
E	O	O	E
C	F	N	C
P	O	S	I
D	A	H	B
C	-	E	O
H	R	F	T
H	O	U	N
U	M	U	E
B	R	E	R
E	A	R	S
I	E	N	G
A	T	J	R
A	E	M	G

APIS CLUES is taking a month off from Puzzlebomb, but posts regularly @apisclues on Twitter.

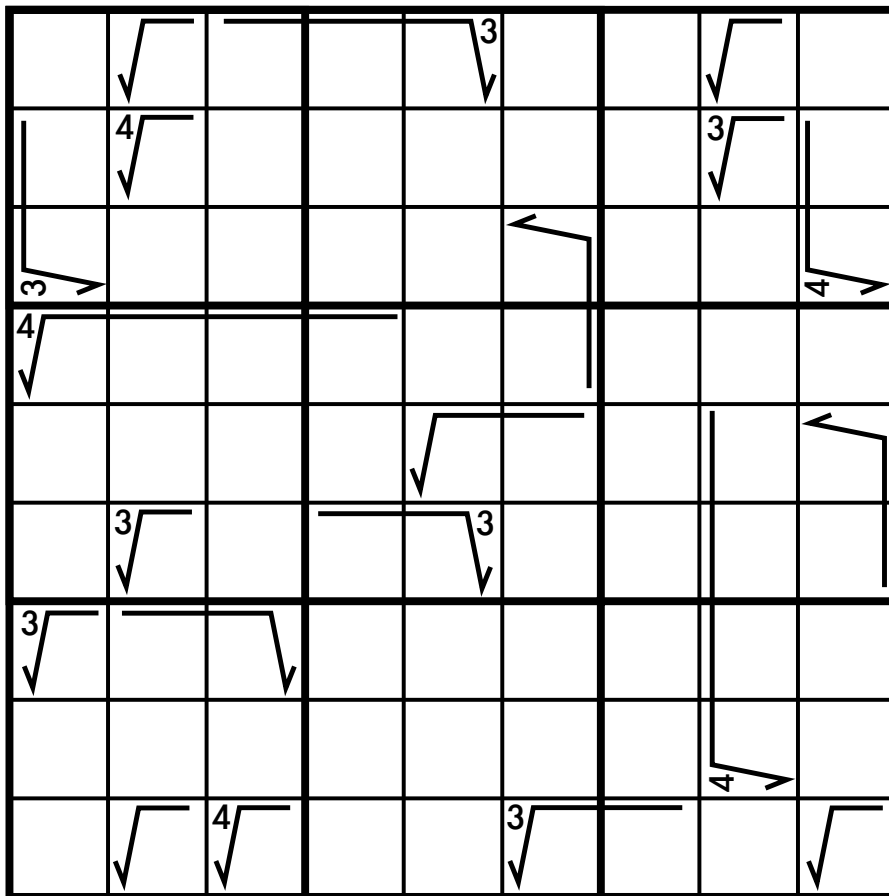
PUZZLEBOMB: assembled by @stecks.

PUZZLEBOMB

SURDOKU

All "surds" represent whole numbers. (It's a sudoku.)

SURDOKU: devised by @stecks & @apaultaylor.



APIS CLUES

Here are five cryptic crossword clues. You must solve the clues, then find the connection between the answers.

1. Condiment in squiggly shape around Berkeley and other campuses (2,5)
2. Germinates, following EU's seasonal obligation? (8,7)
3. Hug boor for this dodgy seat? (6,7)
4. Leo X, for one, going to extremely niche dances - they're useful for exercise (8,5)
5. Amble on stupidly during phone conversations - the silly things you say may be recorded here (12)

APIS CLUES: devised by @apisclues.

PUZZLEBOMB

Car that ruins walk { } What cows don't drink

OFF THE BRAILLES: by @stecks & @apaultaylor, based on an idea by @andrew_taylor.

Utensil { } Happiness

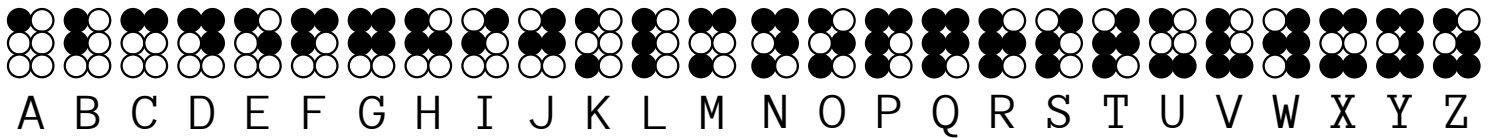
Drop in on { } Crazy

→ { } Clue

Programming language { } Nose gunk
{ } China's enemy

OFF THE BRAILLES

Use the clues to complete the braille stacks.



APIS CLUES

Here are five cryptic crossword clues. You must solve the clues, then find the connection between the answers.

1. Tighten agreement (8)
2. Little spinner reacts bizarrely (6)
3. Tug the Gherkin, for example? (5)
4. Chap from Italian commune, or the capital? (5)
5. Arthur Murray having something to do with canines, perhaps? (6)

APIS CLUES: devised by @apisclues.

PUZZLEBOMB

VERB GARDEN:
by @apaultaylor

Find the verbs and arrange the meanings in the grid.

VERB GARDEN

?
?
?

	BY	UP	OUT
?			
?			
?			

clothes
comedy
decline
distinctive
escape
faint
ignore
manage
wait

			5 ₃	7 ₂	8 ₁		0 ₃	
	2 ₂	11 ₃	15 ₃					8 ₂
11 ₃						8 ₂	3 ₂	
4 ₂				2 ₂	3 ₂	7 ₃		
5 ₂			5 ₃					
	10 ₃							

0	0
0	1
1	1
0	2
1	2
2	2
0	3
1	3
2	3
3	3
0	4
1	4
2	4
3	4
4	4

DOMINO KAKURO:
by @stecks and @apaultaylor.

KAKURO DOMINO

Fit the dominoes into the grid, so that the white number gives the total of each run, and the black number gives the number of dominoes that intersect the run.

APIS CLUES

Here are five cryptic crossword clues. You must solve the clues, then find the connection between the answers.

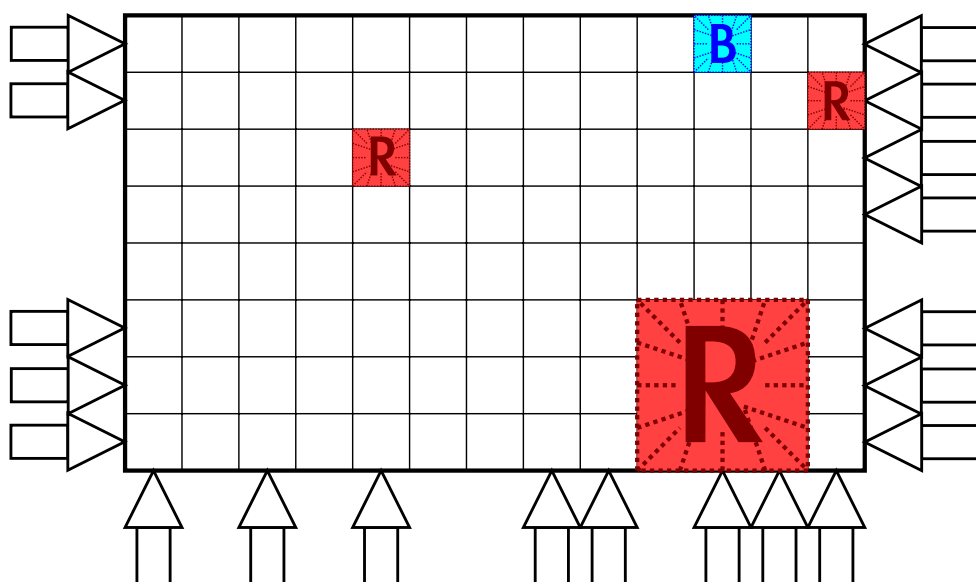
1. Dispatch wizard to imprison all three leaders of eldritch Satan spawn (7)
2. Following boat, 'e put head under (5)
3. Missionary, perhaps, put forward one leg (8)
4. Paper armour (4)
5. Drink consuming time leads to wager (5)

APIS CLUES: devised by @apisclues.

PUZZLEBOMB

FITWORKS

FITWORKS: by @stecks.



This firework display is incomplete. The launch points around the sides and bottom of the grid can each launch a single firework to a specified height, where it will explode to a certain size. The fireworks shown have already been launched. Place the remaining fireworks around the grid.

Remaining fireworks:



Rules:

- explosions cannot overlap
- fireworks are red, green or blue
- the same colour fireworks cannot light adjacent squares
- all squares must be lit

Remaining explosion sizes:
 2 × diameter 5 square
 3 × diameter 3 square
 15 × diameter 1 squares

APIS CLUES

Here are five cryptic crossword clues. You must solve the clues, then find the connection between the answers.

1. Go beyond answering back about unpleasant relative's personality, to begin with (7)
2. Swear dance is ecstasy (7)
3. Get into key (5)
4. I tut at Ed's messed up mindset (8)
5. Punch alien as an outlet (6)

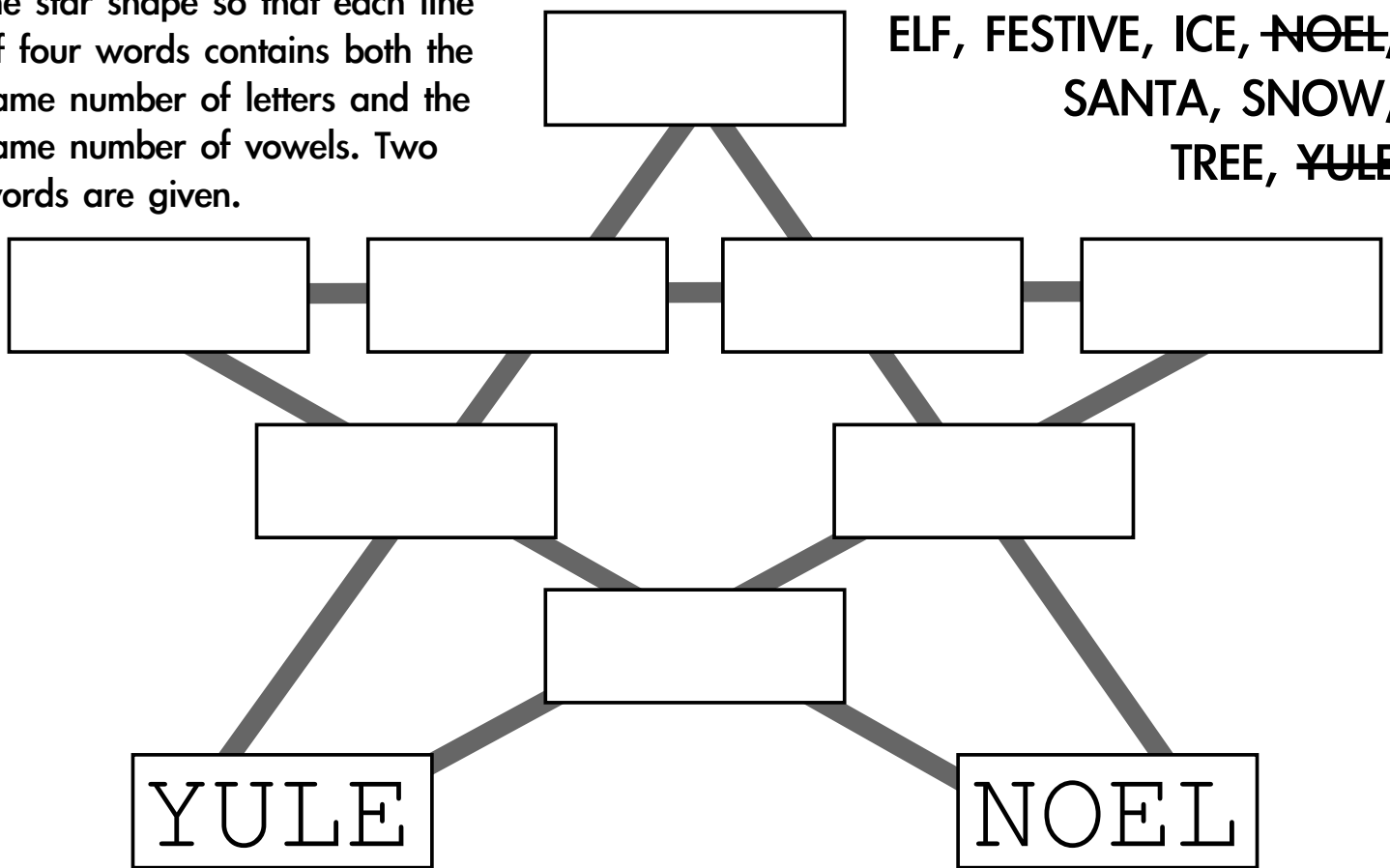
APIS CLUES: devised by @apisclues.

PUZZLEBOMB

JINGLE VOWELS

Place the ten festive words into the star shape so that each line of four words contains both the same number of letters and the same number of vowels. Two words are given.

CRACKER, DOCTOR WHO, ELF, FESTIVE, ICE, ~~NOEL~~, SANTA, SNOW, TREE, ~~YULE~~



JINGLE VOWELS: by @stecks and @apaultaylor.

APIS CLUES

APIS CLUES: devised by @apisclues.

Here are five cryptic clues. You must solve the clues, then find the connection between the answers.

1. Behave listlessly following friends taking drug, one associated with the explosive destruction of toilets (5,4)
2. Rat-catcher saw Billie topless (4,5)
3. We should finally disperse infants - nursery's gone bust, for starters, and they play at reception (7,4)
4. 80s computer salesman adding UNIX command to computer network to open setting assistant (4,5)
5. Singer Daly played on Queen's radio (4,4)